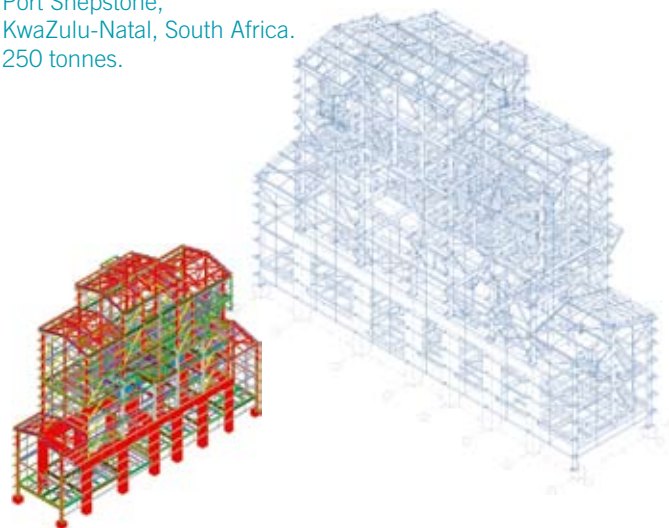




[www.walshds.ie](http://www.walshds.ie)  
Structural Steelwork Detailing

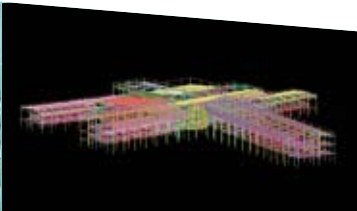
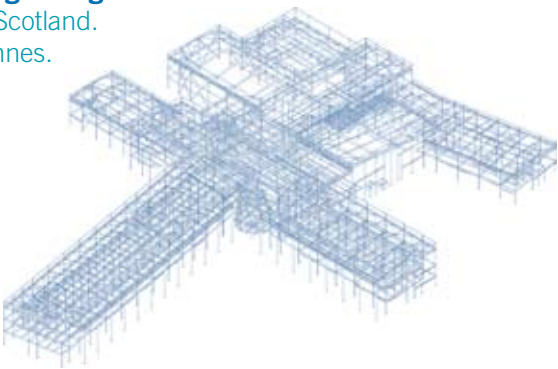
**Natal Portland Cement  
Raw Mill Feed Building**

Port Shepstone,  
KwaZulu-Natal, South Africa.  
250 tonnes.



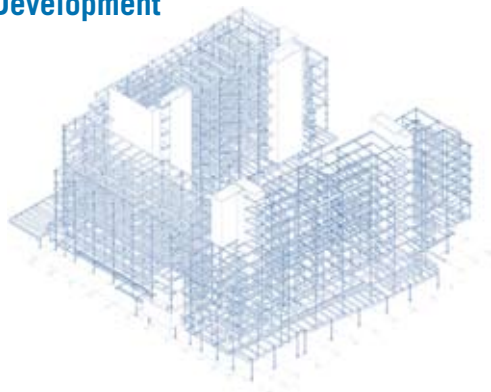
**St. Mungos High School**

Falkirk, Scotland.  
1055 tonnes.



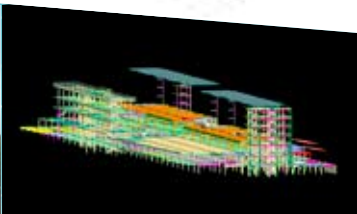
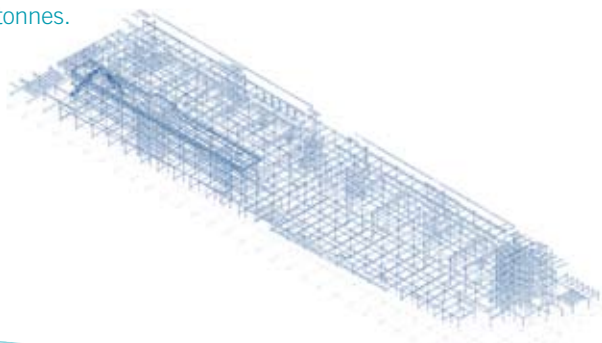
**Barrow Street Office &  
Residential Development**

Dublin, Ireland  
2100 tonnes.



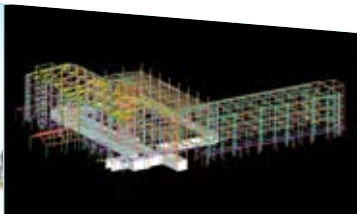
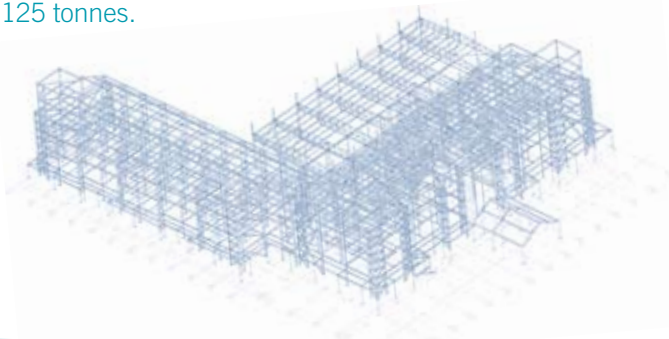
**Parkside Apartment  
& Retail Centre**

Portlaoise, Co. Laois, Ireland.  
2060 tonnes.



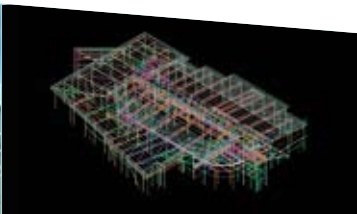
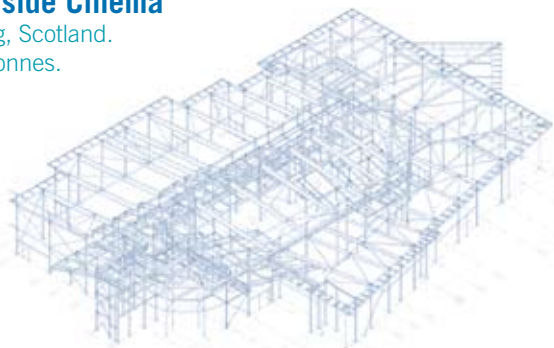
**The Heritage Golf & Spa Resort**

Killenard, Co. Laois, Ireland.  
1125 tonnes.



**Forthside Cinema**

Stirling, Scotland.  
305 Tonnes.

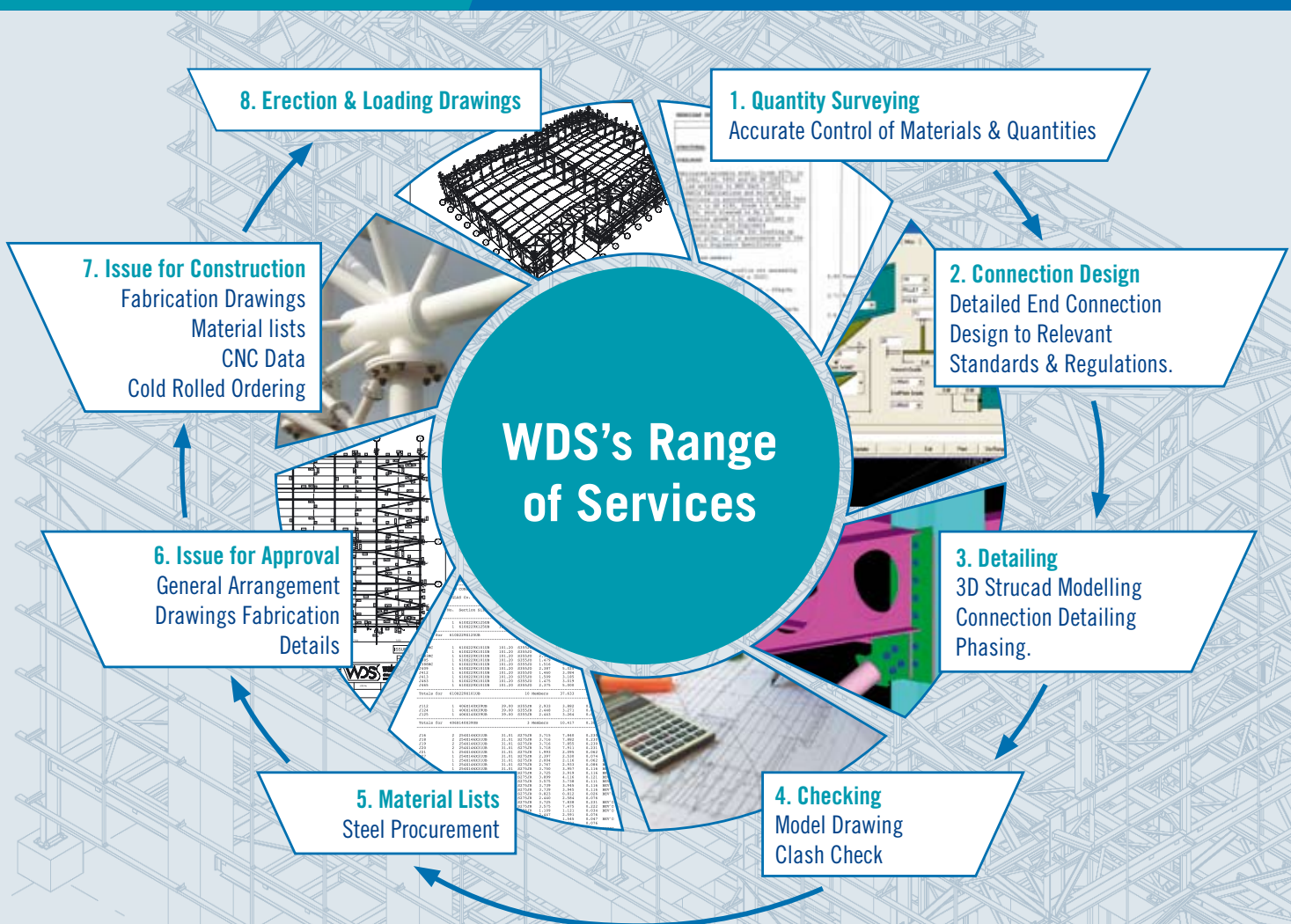




## About WDS

- Established in 1996, WDS has a long standing reputation for providing a quality professional service on schedule and in budget.
- WDS are an independent structural steel detailing company operating from Ireland.
- All our projects are detailed using the latest technology from Acecad Software - Strucad.
- For automated fabrication shops, we provide CNC data to a wide range of post processors compatible with most CNC machines including Peddinghaus, Kaltenbach etc.
- Fast project turn around time is achieved through electronic file transfer by e-mail or FTP.
- WDS is a corporate member of the SCI.
- WDS was a recent winner in the International Strucad Drawing Competition.

## Our Range of Services



24 Patrick Street, Mountmellick,  
Co. Laois, Ireland.

t. +353 (0)57 862 4913  
f. +353 (0)57 864 4390  
e. [walshds@eircom.net](mailto:walshds@eircom.net)



WDS was established in 1996 to provide a professional, independent drafting service for fabricators. WDS has built an impressive portfolio of clients in Ireland and overseas by offering a complete draughting and design service using the latest Strucad 3-D modelling technology.

[www.walshds.ie](http://www.walshds.ie)